

Nanla gives you the option to power your home using grid power or abundant solar energy.



Wall mounted smart backup system



NANLA

Unexpected power cuts and power fluctuatiions can become regular experiences as it reduces your machine's efficiency, automatically putting you at a tough situation. **Nanla** by Vitronics Controls come as your unwavering power companion and a one stop solution to a stable power backup system. As a stylish wall mounted smart power backup, Nanla embraces the best of two worlds by powering your indoors through the usage of grid and abundant solar power. The solar energy stored provides constant and clean power that makes for adequate and efficient energy availability. LifePO4 battery cells integrated in Solar PCU powers safe homes & proves as an bliss by saving 25% more energy than lead acid battery. With its in-built batterymanagement system & safely mechanism against surge and short circuit protection.

The lifecycle of these batteries are up to 10 years followed by no water top-up and zero maintenance. Welcome to the brighter side of thing! Wall mounted smart power backup Nanla endlessly power flow through the usage of grid and abundant solar power. Absolute brightness for all times is what Solar PCU brings to you.

Bring your unwavering power companion home to experience a power house connectivity.

Is designed aesthetically to suit your modern sensibilities.



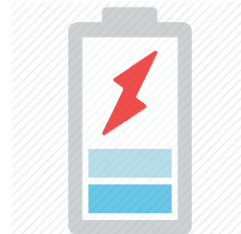
Zero Maintenance

No water top up or maintenance required



3x life

LifePO4 batteries with extra long life



3x charging speed

Gets fully charge within 2-4 hours



upto 15% more efficient

High efficiency cells that save energy

Solar PCU

SOLAR CHARGER SPECIFICATIONS

Parameter	Nanla 800VA	Nanla 1500VA
Rated Voltage	12 V	24 V
Rated Current	30 AMP	60 AMP
Charge Controller Technology	MPPT	MPPT
Battery Charging Voltage	13.7 V (Factory Settable)	27.4 V (Factory Settable)
Battery Low Disconnect	9.5 V (Factory Settable)	19 V (Factory Settable)
Over Charge Cut-off Voltage	14.2 V (Factory Settable)	28.4 V (Factory Settable)
Fuse Rating	30 A	30 A
Panel recommended	380 W	800 W
Suitable Batteries	12 V 50 AH LifePO4	24 V 50 AH LifePO4

OTHER SPECIFICATIONS

Operating Temperature	0°C to 55°C	
Weight	20 K gms (Approx.)	30 K gms (Approx.)

OUTPUT

DC Output	3 Dc Output 20 W For tube and Fan 2USB Port total 100W	
DC Output	230 V 800 VA	230 V 1500 VA

DISPLAY

It incorporates 2 line LCD to showing following parameters

Company Name
Battery Status
PV Voltage
PV Current
KWH (Kilo watt hour in a day)
KWH in a month
Battery Voltage
Battery Current

PROTECTION

Battery deep discharging
Battery over charging
Short Circuit
Over Temperature
Battery / PV reverse protection

Solar PCU

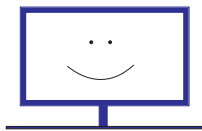
FEATURES

- Fuse provided to protect short circuit condition
- System in-built protection against battery over-charge & deep discharge
In-built blocking diode provided to prevent reverse flow of current through PV module
- It has high efficiency SMPS charger. It implements a smart maximum peak power tracking (MPPT) algorithm that tracks the peak power point of a solar panel, irrespective of operating conditions.
Increase life of battery by :
 - Using Battery State of Charge SOC% for controlling depth of discharge. SOC controls are factory adjustable.
Normal battery voltage base controls also protect battery along with SOC controls.
It runs Periodic Finishing loop for better charging.
It implements a low battery disconnect feature to prevent the battery from discharging below a certain charge state.
- Battery Voltage settings are optionally temperature compensated thermistor based temperature sensor supported.
Suppose two modes of operation for load.
- Normal On/ Off via switch Auto mode.
Use Dusk Dawn monitoring & Load is switched on only during Dusk after a factory programmable delay.
Duration of load on is also programmable.
Maintains Solar Energy Meter for solar energy produced in a day & for last 30 days.
- Last Fault Display and record.
- Highest charging current 20 amps (30 Amps on request) !
- A patent ALR (Adaptive Loss Reduction) process gives more efficient charging system.
- In built SBM (Smart Battery Management) system provides higher degree of battery protection and life.
- 5-stage battery charge control system for lower gassing and faster Charging.
- Higher Ruggedness: gives higher degree of protection to the card from
 - REVERSE PHASE and
 - BATTERY LOOSE connections.



**child
safe**

No open wires and terminals, eliminates risk of accidental contact with electrical points



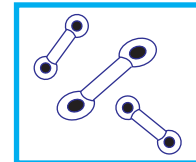
**safe for
appliances**

Your appliances will love the pure sinewave output of Nanla which gives them longer life



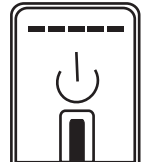
**safe for
environment**

Nanla uses LifePO4 battery technology which is safe for environment



**surge & short
circuit protection**

Nanla protects your appliances by blocking voltage surges and short circuits through its in-built safety mechanisms



**UPS
mode**

UPS mode to power your more voltage sensitive devices such as desktop Pcs

Protect Solar Charge Controller from direct Sunlight & Water.

Panel open circuit voltage should not to do be more than specified voltage

*Specification are subject to change without prior notice due to constant improvement in design & technology.

[Authorised Dealer](#)



An ISO 9001-2008

VITRONICS CONTROLS PVT. LTD.

S. No. 58/7A/1, Opp. Kheteshwar Ashram, Gokul Nagar,
Katraj Kondhwa Road, Kondhwa Bk.Pune - 411 048, India.

Tel. : +91 20 2696 2548, 2696 1311, +91 9404731535

Email:marketing@vitronicscontrols.com